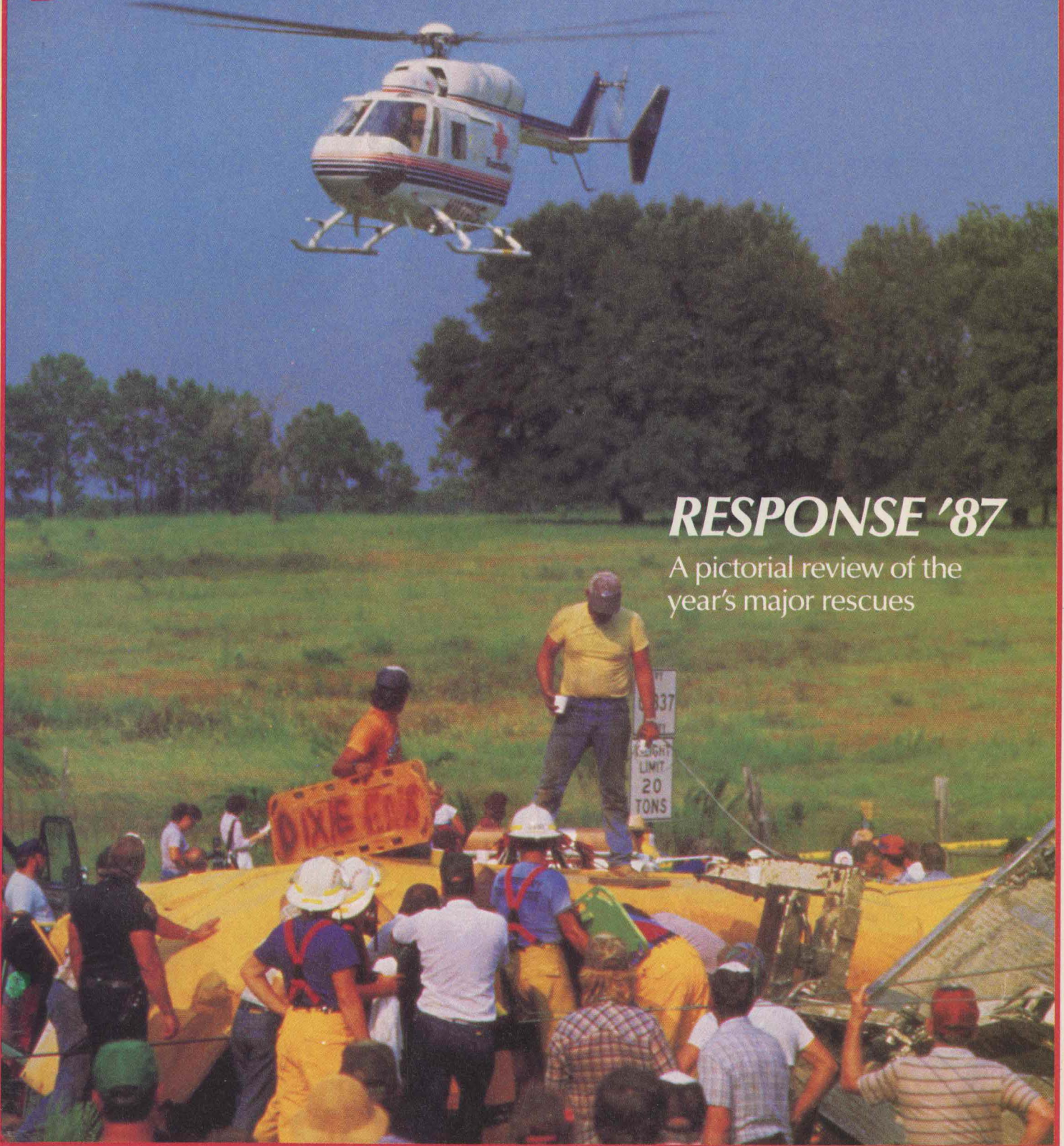


FEBRUARY 1988 VOL. 13 NO. 2 \$2.50

jems

JOURNAL OF EMERGENCY MEDICAL SERVICES

The Racer's Edge
New Column: Pediatric Notebook
Improve Your Trauma Assessment



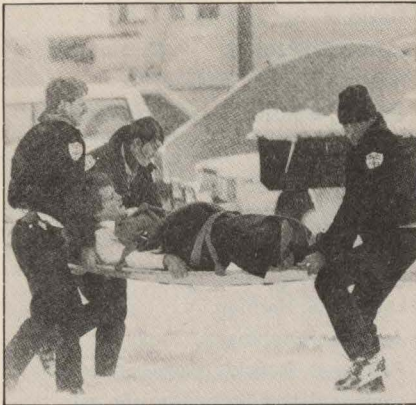
RESPONSE '87

A pictorial review of the year's major rescues

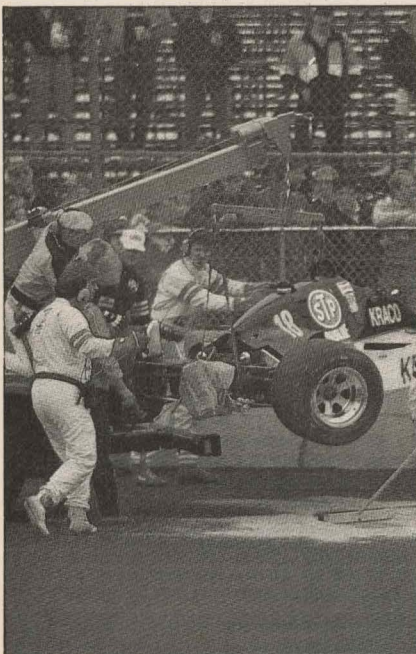
August 28, 1987 Bronson, Florida – Flatbed Truck Collides with Schoolbus

CONTENTS

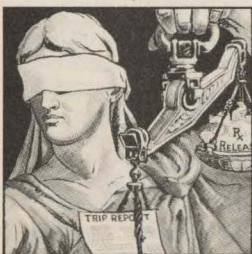
FEBRUARY 1988, VOL. 13, NO. 2



24



36



47

FEATURES

- 24 **The Major Responses of 1987** by David M. Beck. A pictorial review of the year's major rescues.
- 28 **A Trauma Victim Algorithm** by Daniel Cavallaro, Ken Grauer, MD et al. An algorithm for rapid patient assessment of the trauma victim answers the question of when to "load and go."
- 36 **The Real Racer's Edge** by Patrick A. Moore. A combination of first-class rescuers and high-tech equipment provide the lifesaving edge for CART race-car drivers.

DEPARTMENTS

- 8 **Letters** - Calendar Sends Reader Back to School; A Trip Abroad; Driver Confession; Transition Had Backups; Infection-Control Guidelines; An Issue That Won't Die.
- 14 **Inside EMS** - Ferry and Tanker Collide in Philippines; LIFEPAK 5 May Discharge Late; EMS TODAY to Return to San Diego in 1989; Ford Expands Recall; News You Can Use.
- 53 **Review** - Two new ACLS Texts Reviewed by Mikel A. Rothenberg, MD.
- 58 **Review** - Pain Management in Emergency Medicine Reviewed by Norman Dinerman, MD.
- 62 **Classifieds**
- 70 **Inroads**
- 73 **Calendar**
- 74 **The Last Word** - Replacing Panic With Training; ATV Manufacturers Spell Safety with an \$; A Total Team Effort.

COLUMNS

- 5 **Publisher's Page** by Jim Page - A Dangerous Game.
- 6 **Guest Comment** by Fred Hurtado - Don't Agonize - Organize.
- 21 **Current Research** by Bruce Goldfarb
- 22 **Tricks of the Trade** by Thom Dick - Poke Prevention: Automatic Safety for Those Dirty Needles.
- 40 **Innovations** by Thom Dick - Small Sharps Container.
- 41 **Clinical Q & A** by Scott Bourn - Great Scott Letters.
- 47 **Legal File** by Carol J. Shanaberger - Why Releases are Ineffective
- 50 **Pediatric Notebook** by Brent H. Dierking, REMT-P, Ellen A. Reynolds, RN, and Max L. Ramenofsky, MD. The Stress of Trauma
- 63 **Interface** by Jack Stout - Let's Dump the "Prevailing Rate" Approach.
- 72 **In The Industry** by Rick Minerd.

Cover photo by John Moran/Gainesville Sun.