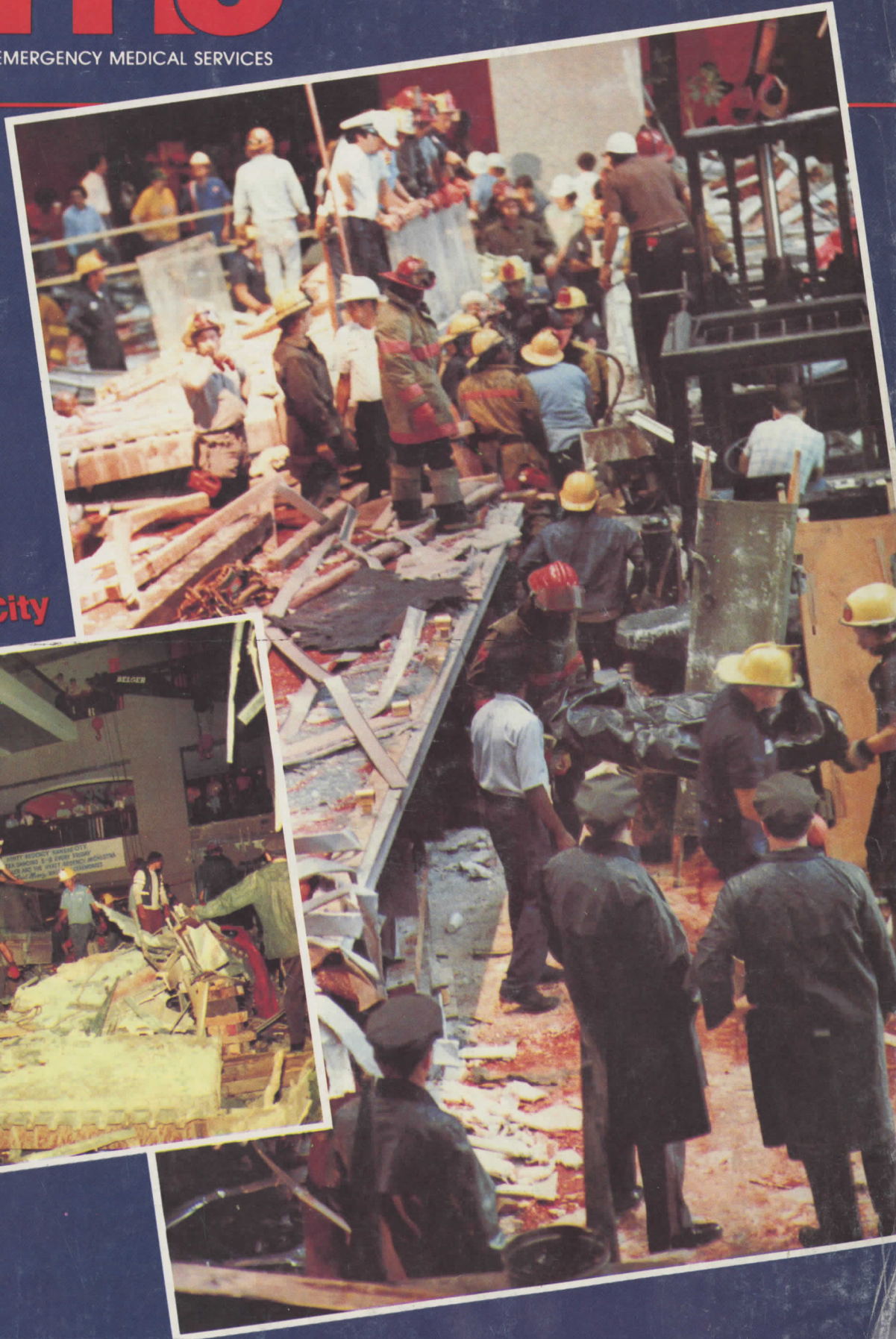


# jems

JOURNAL OF EMERGENCY MEDICAL SERVICES

## Nightmare in Kansas City



**James O. Page**  
Publisher and Editor-in-Chief

**Keith Griffiths**  
Managing Editor

**Thom Dick**  
Associate Editor

**Cleve Trimble, MD**  
Medical Editor

**Molly Hillson**  
Assistant Editor

**Jane Ann Seymour**  
Assistant to the Publisher

**Suzanne Lloyd**  
Advertising Manager

**Debbie Seymour**  
Circulation Manager

**David Boe**  
Design Consultant

**Joan Whitcombe**  
Production Manager

**Executive Office**  
P.O. Box 152  
Morristown, NJ 07960  
201/766-7937

**Editorial Office**  
P.O. Box 1026  
Solana Beach, CA 92075  
714/481-1128

**Advertising Office**  
1131 Alta Loma, Suite 424  
West Hollywood, CA 90069  
213/854-3087

*jems*, a Journal of Emergency Medical Services, is published monthly by Jems Publishing Co., P.O. Box 152, Morristown, NJ 07960.

**Subscription Information:** Send \$12.40 for one year (12 issues), \$22.00 for two years (24 issues), or \$30.00 for three years (36 issues) to P.O. Box 152-M, Morristown, NJ 07960. Add \$10.00 per year for mailings outside the U.S. and Canada. Add \$5.00 per year for Canadian mailings. Financial or other discounts, services or inducements may be offered periodically to encourage subscriptions or resubscriptions. Change of address notices should include both old and new addresses and zip codes. CANADA—*jems* is distributed in Canada by Emergency Care Ontario, P.O. Box 604, Niagara Falls, Ontario L2E 6V5; (416) 357-4825.

**Advertising Information:** Rates are available upon request. Contact Suzanne Lloyd, advertising manager, at 213/854-3087; 1131 Alta Loma, Suite 424, West Hollywood, CA 90069.

**Editorial Information:** Manuscripts, letters and queries should be directed to Keith Griffiths, managing editor, P.O. Box 1026, Solana Beach, CA 92075.

Copyright 1981 Jems Publishing Co., Inc. No material can be reproduced without the express permission of the publisher; ISSN 0197-2510. Controlled circulation postage paid at San Fernando, California.

Postmaster—Return Form 3579 to P.O. Box 152, Morristown, NJ 07960.

Cover photo by Dan White, K.C. Star. Inset photo courtesy K.C. Fire Dept. Design by David Boe.

# CONTENTS

SEPTEMBER 1981  
VOL. 6 NO. 9

## FEATURES

- 32 Nightmare in Kansas City**  
When concrete and steel suspended walkways collapsed, hundreds of guests at the Hyatt Regency Hotel were killed and injured. The tremendously difficult extrication process and the large number of persons critically injured presented perhaps the greatest challenge yet to a modern prehospital care system —*by Jack Stout and Patrick Smith*
- 36 A Paramedic's Perspective** *by James Taylor*
- 40 An EMT's Perspective** *by Gary S. Frank*
- 45 Recall the Report**  
A recent government report claims that the advent of modern mobile coronary care has not had a significant impact on the reduction of cardiovascular mortality rates . . . but a careful examination of the report reveals that incorrect data was used in its compilation. —*by Sinclair Germaine*

## DEPARTMENTS

- 6 Editorial** — Avoid the Legal Minefield: Don't Stop CPR
- 8 Ambulance Survey**
- 10 Letters**
- 12 Inside EMS**
- 15 Around the Nation**
- 21 International Mail** *by Kate Dernocoeur*
- 25 Washington Report** *by Jim Malone*
- 26 Calendar**
- 28 Tricks of the Trade** *by Thom Dick* — Taking Care of your "Jaws"
- 48 Index to Advertisers**
- 53 Clinical Review** *by Michael Antoline* — Near Drowning
- 57 Inroads**
- 62 The Publisher's Page** — The Spectator