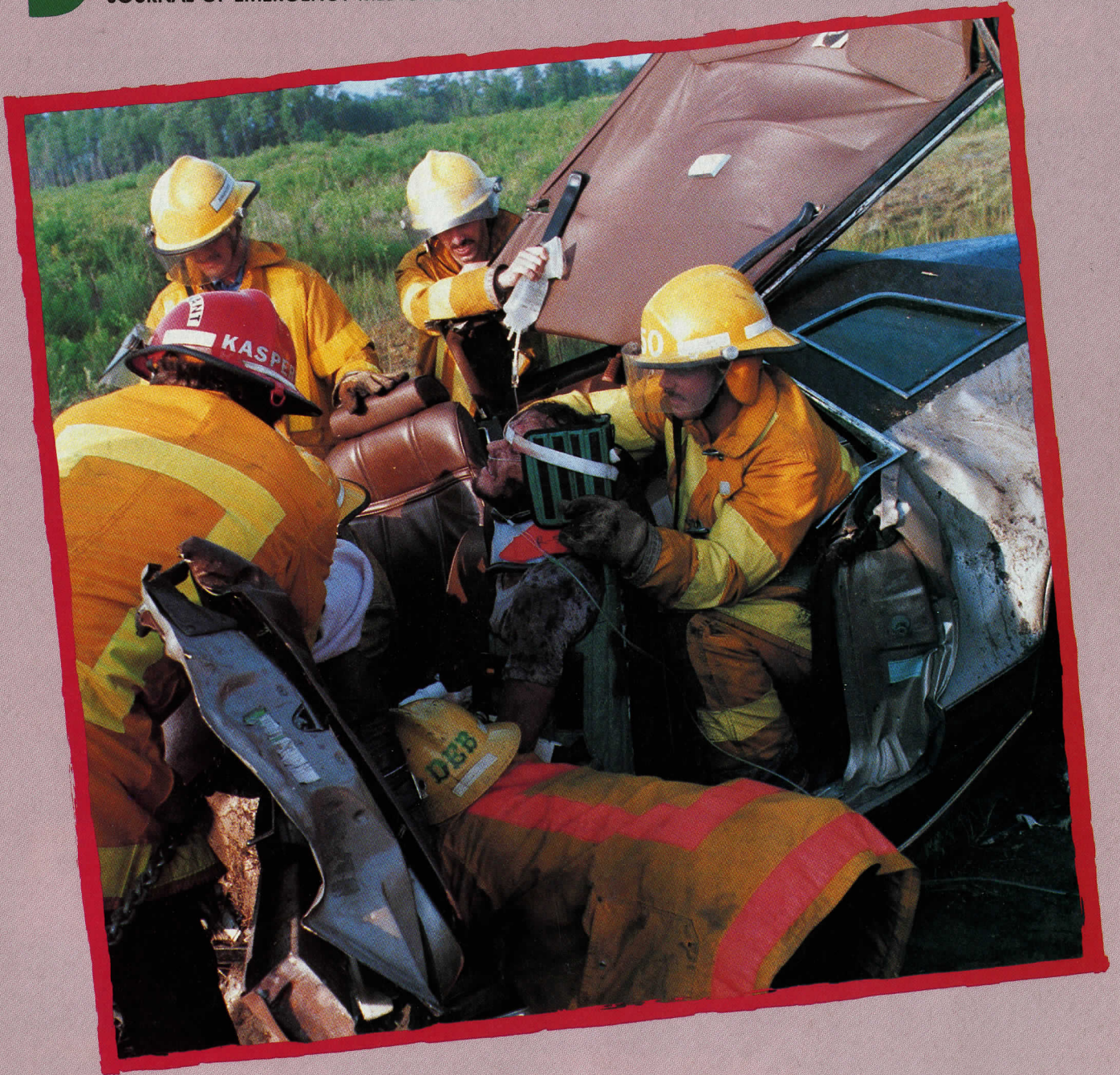


APRIL 1984 VOL. 9 NO. 4

# jems

JOURNAL OF EMERGENCY MEDICAL SERVICES

**Rx for Medical Control**  
**Myths of Disaster Training**  
**Intubation Innovation**



## **MEDICAL ASPECTS OF EXTRICATION**

## FEATURES

**James O. Page**, Publisher, Advertising Manager

**Keith Griffiths**, Executive Editor

**Bradley H. Smith**, Editor

**Cleve Trimble, MD**, Medical Editor

**Rick Miner**, Senior Editor

**Thom Dick**, Associate Editor

**Molly Hillson**, Assistant Editor

**Vivian Griffiths**, Assistant Editor

**Contributing Editors:**

Norm Dinerman, MD, Mike Frank, MD, Gary Morris, Mary Newman, William Roush, MD, Sarah Helyar Smith, Gail Walraven

**Maureen Maguire**, Art Director

**Joel Harris**, Design Consultant

**Jems Publishing Company, Inc.**

**James O. Page**  
President

**Keith Griffiths**  
Vice President

**Jane Ann Seymour**  
Secretary-Treasurer

**Editorial/Advertising Offices**

215 South Highway 101, Suite 207  
P.O. Box 1026  
Solana Beach, CA 92075  
619/481-1128

**Subscription Information:** Send \$15.95 for one year (12 issues), \$27.75 for two years or (24 issues) \$37.75 for three years (36 issues) to P.O. Box 27966, San Diego, CA 92128. Add \$10 per year for mailings outside the U.S. For subscription orders, problems or for a change of address, call toll free 1-800/321-3333 (in California call 1-800-354-8400).

**Jems**, Journal of Emergency Medical Services, is published monthly by Jems Publishing Co., 215 South Highway 101, Suite 207, P.O. Box 1026, Solana Beach, CA 92075.

CANADA — jems is distributed in Canada by Emergency Services Educational Association, P.O. Box 2560 Grand Forks, B.C. V0H 1H0. Financial or other discounts, services or inducements may be offered periodically to encourage subscriptions or resubscriptions.

**Advertising Information:** Rates are available upon request. Contact Jim Page, advertising manager at 215 South Highway 101, Suite 207, P.O. Box 1026, Solana Beach, CA 92075; 619/481-1128.

**Editorial Information:** Manuscripts and queries should be directed to Brad Smith, Editor, P.O. Box 1026, Solana Beach, CA 92075. Editorial guidelines are available upon request. Submitted manuscripts should be typed double-spaced and submitted in triplicate.

**Copyright 1984** Jems Publishing Co., Inc. No material can be reproduced without the express permission of the publisher; ISSN0197-2510. Controlled circulation postage paid at Solana Beach, California and at additional mailing offices.

**Postmaster** — Return Form 3579 to jems, P.O. Box 27966, San Diego, CA 92128.

Second class circulation postage paid at Solana Beach, California and at additional mailing offices.

**Cover photo** by Bob Cross. Design by Joel Harris.

**Clinical Corner: Medical Aspects of Extrication . . . . . 30**

Protocols and personnel required to free entrapped patients are essentially medical in nature and therefore must come under medical guidelines which define priorities based on patient care. The necessary skills and knowledge for prehospital providers and their medical directors are explored in this two-part series — *by Ronald D. Stewart, MD*

**Rx for Medical Control . . . . . 39**

The proper mixture of the prospective, intermediate and retrospective aspects of medical control is essential to quality prehospital care as shown by this description of each component — *by E. Michael Latessa*

**Myths of Mass Casualty Training . . . . . 43**

Myths about mass casualty training contribute to a dangerous lack of such training in EMS — *by Gary P. Morris*

**Fiber Optic Stylet Laryngoscope . . . . . 47**

Though not an accepted prehospital device at this time, the fiber optic stylet laryngoscope holds promise as a valuable tool of the future — *by Pamela Waters and Peter Podell*

## DEPARTMENTS

**Editorial . . . . . 4**  
The Ideal World

**Letters . . . . . 6**  
CPR compression threshold; Giving the best the edge; Thank you Mr. Stout; jems in the classroom; A call for information; 1984 Almanac; Thoughts from an ECA

**Guest Comment . . . . . 9**  
Comparing EMS Systems — *by Kate Dernocoeur*

**Inside EMS . . . . . 11**  
Call screening in Dallas; Red Cross seeks olympic volunteers; Computers in ambulances; Technical rescue symposium; EMS taxes; BEOG grants for paramedic training; court rules in favor of Medevac—EMTs recognized as professionals; National standard setting group established.

**Calendar . . . . . 13**

**Current Research . . . . . 19**  
Prehospital care and falls; Massachusetts burn registry

**Around the Nation . . . . . 21**  
Helicopter conflict in Chicago; Erasing fire district borders; Defibrillation by Oregon EMTs; Attack on system abuse — *by Tom Vines*

**My Turn . . . . . 23**  
Of Crackers and Butter — *by Avery Leonard*

**Special Report . . . . . 24**  
Influence Peddling Backfires — *by Danny Pollock*

**Tricks of the Trade . . . . . 26**  
Flogs: Training Tips for Untaught Teachers — *by Thom Dick*

**Interface . . . . . 52**  
Lessons from Stony Creek — *by Jack L. Stout*

**Advertiser Index . . . . . 54**

**Inroads . . . . . 62**  
Robbins spine board strap; Morrison triangular bandage; Flexisplint; Vitalograph aspirator; Wolff ECG receiver/writer

**Innovations . . . . . 66**  
Oxy-Clip — *by Thom Dick*

**Special Report . . . . . 68**  
EMS by the Numbers — *by Joseph P. Ornato et al.*

**The Publisher's Page . . . . . 70**  
An Open Letter to Mr. Reagan — *by Jim Page*