

September 1991 Volume 16 Number 9 \$3.00

jems

JOURNAL OF EMERGENCY MEDICAL SERVICES

1992 Buyers' Guide

Laryngeal Trauma

LATERAL SUPPORT PADS

ANTERIOR STABILIZATION CRANK



Putting the **SQUEEZE** on
For Sound
Product Research

DA VISE, HEAD IMMOBILIZER
BY GEOFF CADY | SCALE 1:3.7"

Contents

JOURNAL OF EMERGENCY MEDICAL SERVICES

FEATURES

COVER

Design

Kathy Bush

Illustration

Arlette G.

Ramphal

Mechanical

Design

Geoffrey A. Cady

32 Of Science and Salesmen: Deciphering Product Research and Evaluation

BY DOUG WOLFBERG

Do EMS-product manufacturers follow a code of honor when developing their products? And is the research that supports these products an honest, scientific substantiation of their worth? This article explores the science and "pseudo-science" behind EMS-product manufacturing and discusses the pursuit of profit vs. the need for valid data to support EMS-product choices.

43 StarCare: Guidelines for Customer Sense

BY MIKE TAIGMAN AND THOM DICK

How do you rate in the quality of care that you deliver? This article will help you shine in your role as a prehospital-care provider.

46 Successfully Treating Congestive Heart Failure

BY PAUL M. MURPHY, BS, NREMT-P, AND JEFFREY P. BORGIO, NREMT-P

Prehospital providers are often called on to assess and treat patients who present with congestive heart failure. Early recognition of CHF's associated signs and symptoms can mean the difference between a rapid recovery and a lengthy recuperative period. This article addresses the pathophysiology, assessment and management of both left- and right-sided acute congestive heart failure.



CEU Article

63 Cardiopulmonary Resuscitation During Ambulance Transport

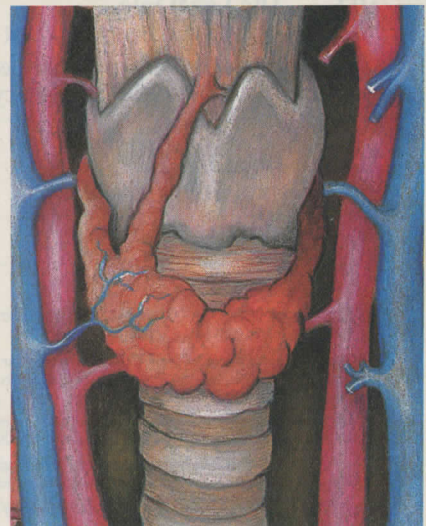
BY EDWARD S. STAPLETON, AAS, EMT-P

Performing CPR during transport is easier said than done and may, in fact, pose significant danger to prehospital providers. Factors such as road conditions, speed and vehicle type, as well as specific CPR methods, are compared in this comprehensive study.

77 Laryngeal Trauma: Uncovering the Hidden Injury

BY ROBERT A. De LORENZO, MD, EMT-P, AND DAN MAYER, MD

Trauma to the larynx is a potentially life-threatening injury that requires rapid assessment and care. Recognition can be difficult, however, as damage is often subtle or masked by other injuries.



117 JEMS Sixth Annual Buyers' Guide: 1992 Edition

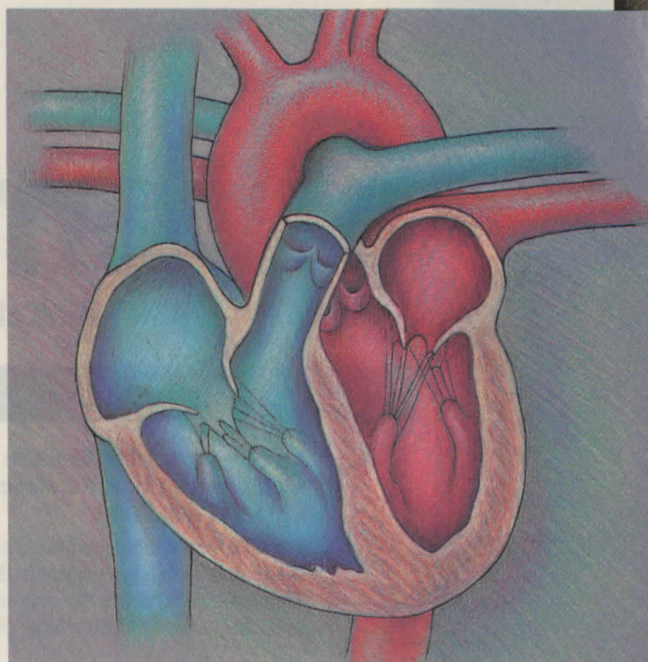
This year's directory reflects the ever-changing choices in EMS products and services.

continued

Illustration by Wendy A. Chapman

COLUMNS

- 7** **Guest Comment**
BY C.T. RYTHER, NREMT-P
When Education Misses the Mark
- 8** **The Publisher's Page**
BY JIM PAGE
Betrayed
- 24** **AIDS Watch**
BY MARION ANGELL GARZA
- 28** **Tricks of the Trade**
BY MIKE SMITH
Pick a Pack of Pocket Scorecards
- 87** **Cardiology Practicum: Precursors to Complete Heart Block**
BY MIKE TAIGMAN AND SYD CANAN
- 93** **Current Research**
BY BRUCE GOLDFARB
- 96** **Book Review**
BY VINCENT P. VERDILE, MD
Hazardous Materials Exposure:
Emergency Response and Patient Care
- 103** **The Legal File**
BY CAROL J. SHANABERGER
When the Patient is a Suspect:
The EMS Role in Emergency Searches
- 109** **Inroads**
BY DOUG WOLFBERG



DEPARTMENTS

- 13** **Letters**
- 16** **Inside EMS**
- 27** **People in EMS**
- 85** **Volunteer Survey**
- 98** **Calendar**
- 113** **Classifieds**
- 146** **JEMS Marketplace Directory**
- 178** **The Last Word**

JEMS, *Journal of Emergency Medical Services*, ISSN 0197-2510, is published monthly by Jems Communications, 1947 Camino Vida Roble, Suite 200, Carlsbad, CA 92008; 619/431-9797 (Fed. ID #22-2357324).

Subscription information: Send \$21.97 for one year (12 issues), \$38.97 for two years (24 issues) or \$52.97 for three years (36 issues) to P.O. Box 3730, Escondido, CA 92033. Add \$12 per year for Canadian subscriptions, \$22 per year for foreign subscriptions. For new orders only, call toll-free 800/334-8152 (in California, call 800/255-3302).

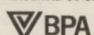
Advertising information: Rates are available upon request. Contact JEMS Advertising Department at 1947 Camino Vida Roble, Suite 200, Carlsbad, CA 92008; P.O. Box 2789, Carlsbad, CA 92018; 619/431-9797.

Editorial information: Manuscripts and queries should be directed to Diane Lofshult, P.O. Box 2789, Carlsbad, CA 92018. Editorial guidelines are available upon request. Submitted manuscripts should be typed, double-spaced and submitted in quadruplicate.

Microfiche: JEMS is available on microfiche. Please direct inquiries to University Microfilms International, 300 N. Zeeb Road, Ann Arbor, MI 48106; 800/521-3044.

Copyright 1991 Jems Communications. No material can be reproduced without the expressed permission of the publisher.

Postmaster: Send address changes to JEMS, P.O. Box 3730, Escondido, CA 92033. Claims of non-receipt or damaged issues must be filed within three months of cover date. Second-class circulation postage paid at Carlsbad, Calif., and at additional mailing offices.

 BPA JEMS is indexed in the Cumulative Index to Nursing & Allied Health Literature.