

jems

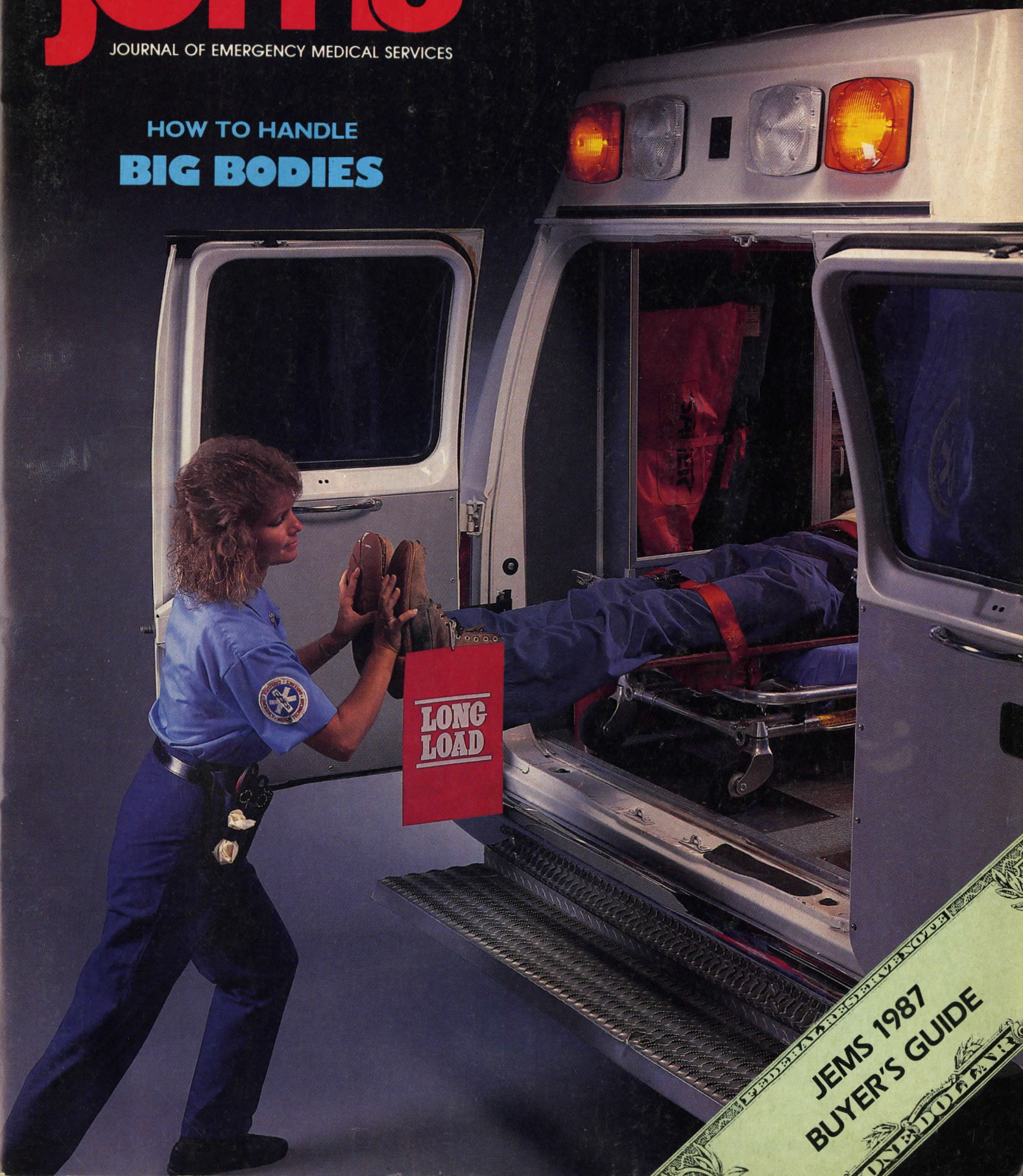
JOURNAL OF EMERGENCY MEDICAL SERVICES

Preparing for Liberty Weekend

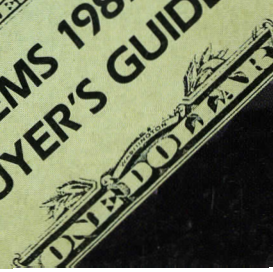
Mass Casualty Case Study

Elusive Body Parts

HOW TO HANDLE BIG BODIES



JEMS 1987
BUYER'S GUIDE



CONTENTS

SEPTEMBER 1986 VOL. 11 NO. 9

Features

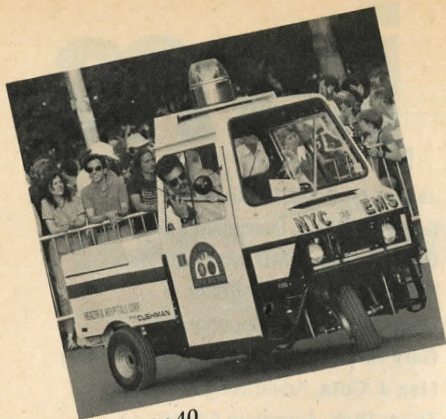
- 33 **Mass Casualty Response: A Case Study** BY CHUCK SUNDBERG, REMT-P. Response to a MCI in medium-sized Sioux City, Iowa is reported.
- 40 **Liberty Weekend** BY JAMES T. KERR, ET AL. The approach used by the NYC/EMS for planning medical coverage of the biggest birthday party in the nation's history is presented.
- 46 **Big Bodies** BY KATE DERNOCOEUR, EMT-P. Rescuers have a responsibility to treat all callers with the best effort. Dealing with the oversized patient is presented.
- 56 **Body Part Eludes Firefighters** BY GREG JILKA. A case where EMS personnel performed the grisly task of trying to save a severed body part is reported.
- 58 **Cardiology Practicum** BY MIKE TAIGMAN AND SYD CANAN. An advanced approach to EKG interpretation can be rewarding to the EMT and the patient.
- 60 **Second-Degree Heart Block** BY JUDITH A. CREMEENS, RN, MA Ed. The atrioventricular blocks typically present students with their greatest challenge. This article focuses on the second-degree block referred to as Mobitz II.
- 80 **Rural Disaster Management** BY RUTH E. UPHOLD, MD, ET AL. Rural EMS personnel were put to the test when an Amtrak train derailed in Vermont.
- 127 **jems 1987 Buyer's Guide.** This guide was created to provide easy-to-access information to help jems readers in their 1987 purchasing decisions.

Columns

- 22 **Around the Nation** by David M. Beck - Disneyland Held Liable for Murder Victim; Pennsylvania Decertifies Paramedic Service; On-site Rescue Training Developed in Virginia; Californians Dying Needlessly; Diabetic EMT Forced to Retire; Quake Buries Man Under Avalanche of Books.
- 26 **Current Research** by Bruce Goldfarb - Ipecac vs. Gastric Lavage; Inhalation Injury; Defibrillators in the Home; Intimations of Mortality.
- 28 **Tricks of the Trade** by Thom Dick - In Search of the Real McCoy.
- 97 **Clinical Q&A** by Scott Bourn - What You Want to Know.
- 113 **Interface** by Jack L. Stout - Strong Words and Weak Arguments.
- 121 **The Legal File** by C.J. Shanaberger - Judicious Use of Restraints.
- 123 **Public Forum** by Dennis M. Murphy - Wearing More Than One Hat.

Departments

- 5 **Editorial** - Danger in Grand Island. sage from NAEMT's President.
- 6 **Guest Comment** - The Hazards of Ignorance by Larry M. Starr, Ph.D.
- 11 **Letters**
- 14 **Inside EMS** - Idaho EMT Defibrillation Program Grant Awarded; Sources of Fuel Fire Eludes Investigators; Intraosseous Infusion Introduced in Salt Lake City; Firefighters Work to Unmask Cause of Children's Fear; NEMSPA Develops Helicopter Safety Pamphlet.
- 24 **Calendar**
- 30 **Special Report** - National Award Winners; New Products, Services Introduced in Orlando; A Mes-
- 100 **Innovations** Tough Terrain Traction by Thom Dick.
- 102 **Inroads**
- 106 **Cardiac Corner** - Citizen CPR: Who Gets Trained and Why Don't Others? by Susan N. Sherman, DPA and Marie McCandless.
- 108 **Classifieds**
- 118 **In the Industry**
- 125 **EMT Insight** - Choosing an EMS Uniform by Rachel A. Thomson.
- 141 **Advertiser Directory**
- 142 **The Last Word**



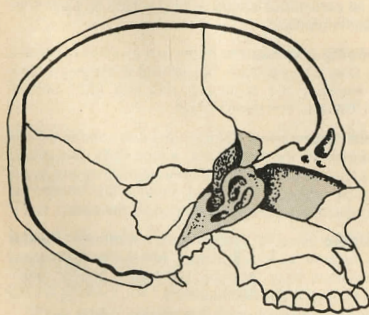
See page 40



See page 46



See page 80



See page 97

Cover photo by Ed Kessler.
Special thanks to Hartson
Medical Service for use of their rig.

THE MOST VALUABLE PLAYER



A medical emergency demands teamwork. And the **AMBULANCE MANAGEMENT SYSTEM** from **RECORDATA WEST** is an invaluable addition to any team... at a very affordable price.

A simple touch of a finger and you'll have all the information you need to provide the fastest possible dispatch service in an emergency. And, when the day is done, the **AMS System** has carefully recorded every bit of data for easy and accurate billing and recordkeeping.

Send for complete information today. Just attach your business card to this ad and send it to: **RECORDATA WEST, INC.**, 2501 West Burbank Blvd., Suite #202, Burbank, California 91505, (818) 954-0132.



RECORDATA WEST, INC.

... now celebrating our 20th year in business.

For More Information Circle #56 on Reader Service Card

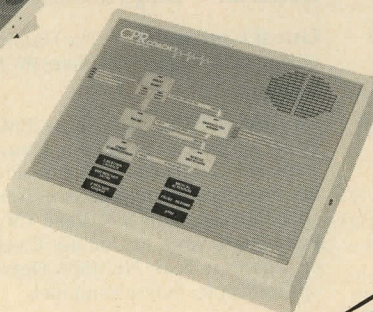
Do You Have

CPR BURNOUT?

The **CPRCOACH™** voice prompter makes CPR training easier and more effective.

At the touch of a button, life-like spoken instructions guide students through the CPR procedures. Proper timing and next steps are provided for adult, child and infant; 1 and 2-rescuer CPR (for layperson and professionals) and obstructed airway procedures.

The flow-chart diagram increases understanding of CPR sequences.



Ideal For Reviews & Recertification
Makes The Instructor's Job Easier!

CALL
(203) 847-3700

auralogic, inc. "The New Voice of CPR"
111 Westport Avenue, Norwalk, CT 06851

CONTAINS NEW 1986 CPR STANDARDS

For More Information Circle #47 on Reader Service Card

jems

JOURNAL OF EMERGENCY MEDICAL SERVICES

James O. Page, Publisher
Keith Griffiths, Executive Editor
Cleve Trimble, MD, Medical Editor
Rick Miner, Senior Editor
Dana A. Jarvis, Production Editor
Gary R. Williams, Director of Marketing
Lisa J. Cota, Advertising Manager
Thom Dick, Associate Editor
Robyn Linderman, Executive Assistant
Susan Seymour, Circulation Manager
Ron St. Germain, Assistant Editor
Dave Beck, Editorial Intern
Carol Bartholomae, Graphic Artist
Theresa Breining, Conference Manager
Contributing Editors: Garry Briese, Norm Dinerman, MD, Mike Frank, MD, Gary Morris, Mary Newman, William Roush, MD
Gail Westmoreland, Copy Editor

Jems Publishing Company, Inc.

James O. Page
Chairman of the Board

Gary R. Williams
President

Keith Griffiths
Secretary-Treasurer

Editorial/Advertising Offices
215 South Highway 101, Suite 100
P.O. Box 1026
Solana Beach, CA 92075
619/481-1128

jems, *Journal of Emergency Medical Services*, (ISSN 0197-2510; Fed. ID #22-2357324) is published monthly by Jems Publishing Co., 215 South Highway 101, Suite 100, P.O. Box 1026, Solana Beach, CA 92075.

Subscription information: Send \$17.95 for one year (12 issues), \$29.95 for two years (24 issues) or \$39.95 for three years (36 issues) to P.O. Box 27966, San Diego, CA 92128. Add \$6 per year for Canadian subscriptions, \$12 per year for foreign subscriptions. For subscription orders, problems or for a change of address, call toll free in the 48 contiguous states: 800/321-3333 (in California call 800/354-8400).

Advertising information: Rates are available upon request. Contact Lisa Cota, advertising manager, at 215 South Highway 101, Suite 100, P.O. Box 1026, Solana Beach, CA 92075; 619/481-1128.

Editorial information: Manuscripts and queries should be directed to Keith Griffiths, editor, P.O. Box 1026, Solana Beach, CA 92075. Editorial guidelines are available upon request. Submitted manuscripts should be typed, double-spaced and submitted in triplicate.

Microfiche: *jems* is available on microfiche. Please direct inquiries to Bell & Howell, Micro Photo Division, Old Mansfield Road, Wooster, OH 44691; 800/321-9881 (in Ohio call 216/264-6666 collect).

Copyright 1986 Jems Publishing Co., Inc. No material can be reproduced without the express permission of the publisher. ISSN 0197-2510. (Fed. ID #22-2357324).

Postmaster: Send address changes to *jems*, P.O. Box 27966, San Diego, CA 92128.

Second-class circulation postage paid at Solana Beach, California and at additional mailing offices.

Cover photo by Ed Kessler.