

JULY 1983 VOL. 8 NO. 7

# jems

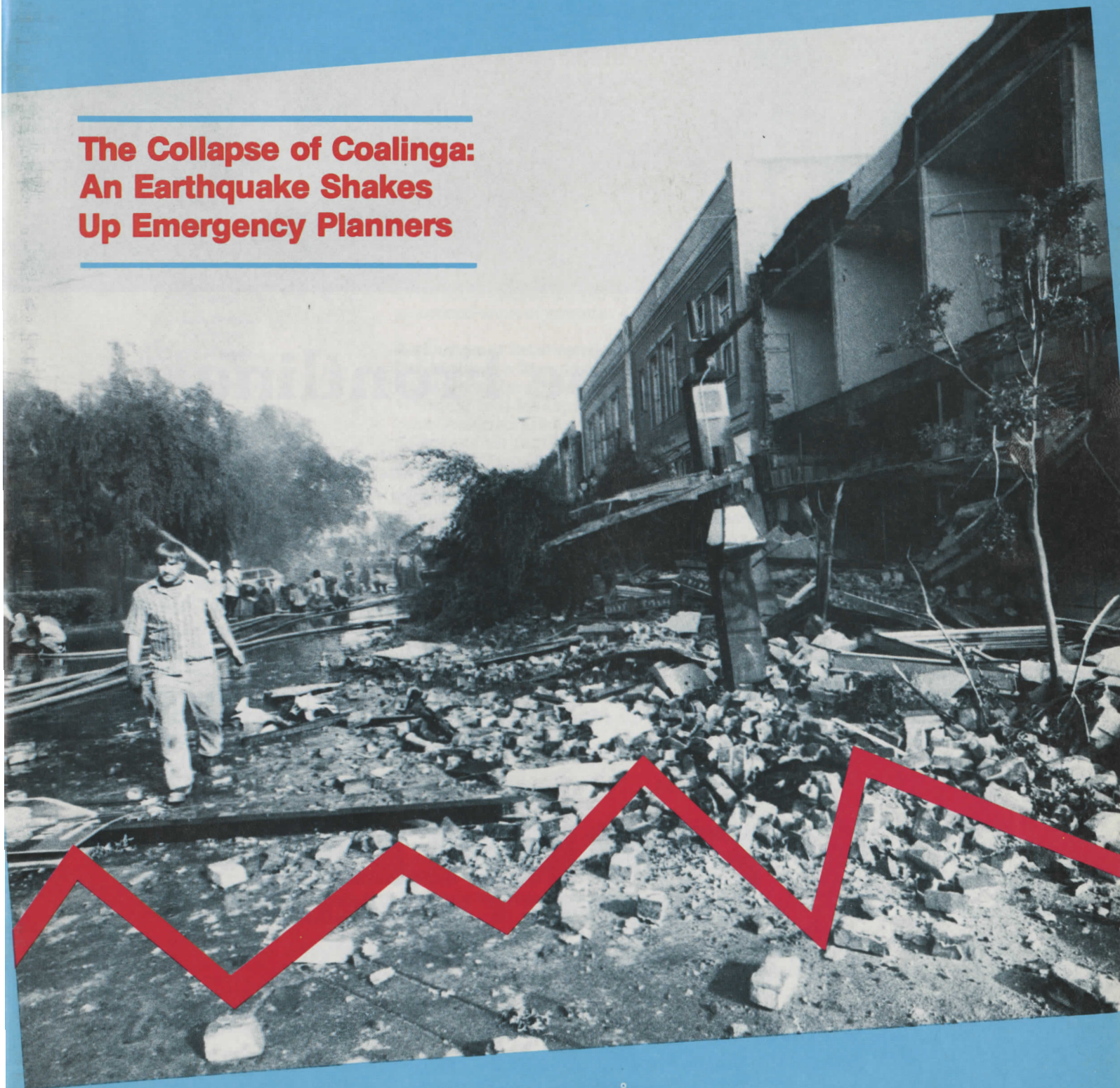
JOURNAL OF EMERGENCY MEDICAL SERVICES

Training for Crisis Intervention  
Triage Tag Survey  
Pitfalls of Oxygen Administration

---

## The Collapse of Coalinga: An Earthquake Shakes Up Emergency Planners

---





**James O. Page**, Publisher  
**Keith Griffiths**, Executive Editor  
**Bradley H. Smith**, Editor  
**Cleve Trimble, MD**, Medical Editor  
**Rick Miner**, Senior Editor  
**Thom Dick**, Associate Editor  
**Molly Hillson**, Assistant Editor  
**Vivian Griffiths**, Assistant Editor  
**Gayle Eskridge**, Assistant Editor

**Contributing Editors:**  
 Mary Newman, Gail Walraven, William Roush, MD, Mike Frank, MD, Gary Morris, Sarah Helyar Smith

**Maureen Maguire**, Art Director  
**Carolyn Page**, Circulation Manager  
**Suzanne Lloyd**, Advertising Manager

**Jems Publishing Company, Inc.**

**James O. Page**  
 President

**Keith Griffiths**  
 Vice President

**Jane Ann Seymour**  
 Secretary-Treasurer

**Executive Office**  
 P.O. Box 401  
 Basking Ridge, NJ 07920

**Editorial Office**  
 P.O. Box 1026  
 Solana Beach, CA 92075  
 619/481-1128

**Advertising Office**  
 1131 Alta Loma, Suite 424  
 West Hollywood, CA 90069  
 213/854-3087

*jems*, Journal of Emergency Medical Services, is published monthly by Jems Publishing Co., 215 South Highway 101, Suite 207, Solana Beach, CA 92075.

**Subscription Information:** Send \$14.40 for one year (12 issues), \$25.00 for two years (24 issues) or \$34.00 for three years (36 issues) to P.O. Box 1026, Solana Beach, CA 92075. Add \$10.00 per year for mailings outside the U.S.

CANADA — *jems* is distributed in Canada by Emergency Services Educational Association, P.O. Box 2560, Grand Forks, B.C. V0H 1H0.

Financial or other discounts, services or inducements may be offered periodically to encourage subscriptions or resubscriptions. Change of address notices should include both old and new addresses and zip codes.

**Advertising Information:** Rates are available upon request. Contact Suzanne Lloyd, advertising manager, at 213/854-3087; 1131 Alta Loma, Suite 424, West Hollywood, CA 90069.

**Editorial Information:** Manuscripts and queries should be directed to Keith Griffiths, Managing Editor, P.O. Box 1026, Solana Beach, CA 92075. Editorial guidelines are available upon request. Submitted manuscripts should be typed double-spaced and submitted in triplicate.

Copyright 1983 Jems Publishing Co., Inc. No material can be reproduced without the express permission of the publisher; ISSN 0197-2510. Controlled circulation postage paid at San Fernando, California and at additional mailing offices. Postmaster — Return Form 3579 to P.O. Box 401, Basking Ridge, NJ 07920.

**Cover photo** by Paul Kuroda/Fresno Bee

# CONTENTS

JULY 1983 VOL. 8 NO. 7

## FEATURES

**Collapse of Coalinga** ..... 24  
 An earthquake is unlike other disasters, for both rescuers and victims. When a trembler struck this small northern California community, the injuries were amazingly light considering the force of the devastation —by *Gene Kallsen, MD*

**Efforts at Coordination** ..... 28  
 A personal view of the Coalinga earthquake —by *Michael Delaney*

**A Better Mousetrap: What Makes Up the "Perfect" Triage Tag?** ..... 30  
 The results of a *jems* survey are discussed, with sample triage tags from around the country analyzed —by *Eddi Cohen, RN*

**Oxygen Administration: Problems and Pitfalls to Avoid** ..... 37  
 The use of oxygen in the field is fraught with potential problems. Commonly utilized oxygen delivery systems are discussed with their associated areas of concern —by *Richard W. Shelly, RRT, EdD*

**An Ounce of Intervention: Developing a Standard Training Program for Behavioral Emergencies** ..... 41  
 While the need for expertise in crisis intervention and the management of behavioral emergencies is frequently cited, most EMS training programs do not address the topic adequately. A model program is discussed —by *John Shybut, PhD and Ron Carter*

**Myths of Behavioral Emergencies** ..... 42  
 Common misconceptions about emotional and behavioral disorders are debunked —by *John R. Tisdale*

## DEPARTMENTS

**Editorial** ..... 4  
 Competition Costly

**Letters** ..... 11

**Inside EMS** ..... 12

**Classified** ..... 14

**Calendar** ..... 15

**Around the Nation** ..... 17

**Paramedic Puzzler** ..... 18  
 by *Gail Walraven*

**My Turn** ..... 19  
 Slow Day  
 by *Avery Leonard*

**Innovations** ..... 21  
 What's New in EMS  
 by *Thom Dick*

**CPR Citizen** ..... 46  
 by *Mary Newman*

**Index to Advertisers** ..... 48

**NAEMT News** ..... 50

**Inroads** ..... 53

**Interface** ..... 54  
 The Public/Private Interface  
 by *Jack Stout*

**The Last Word** ..... 62