

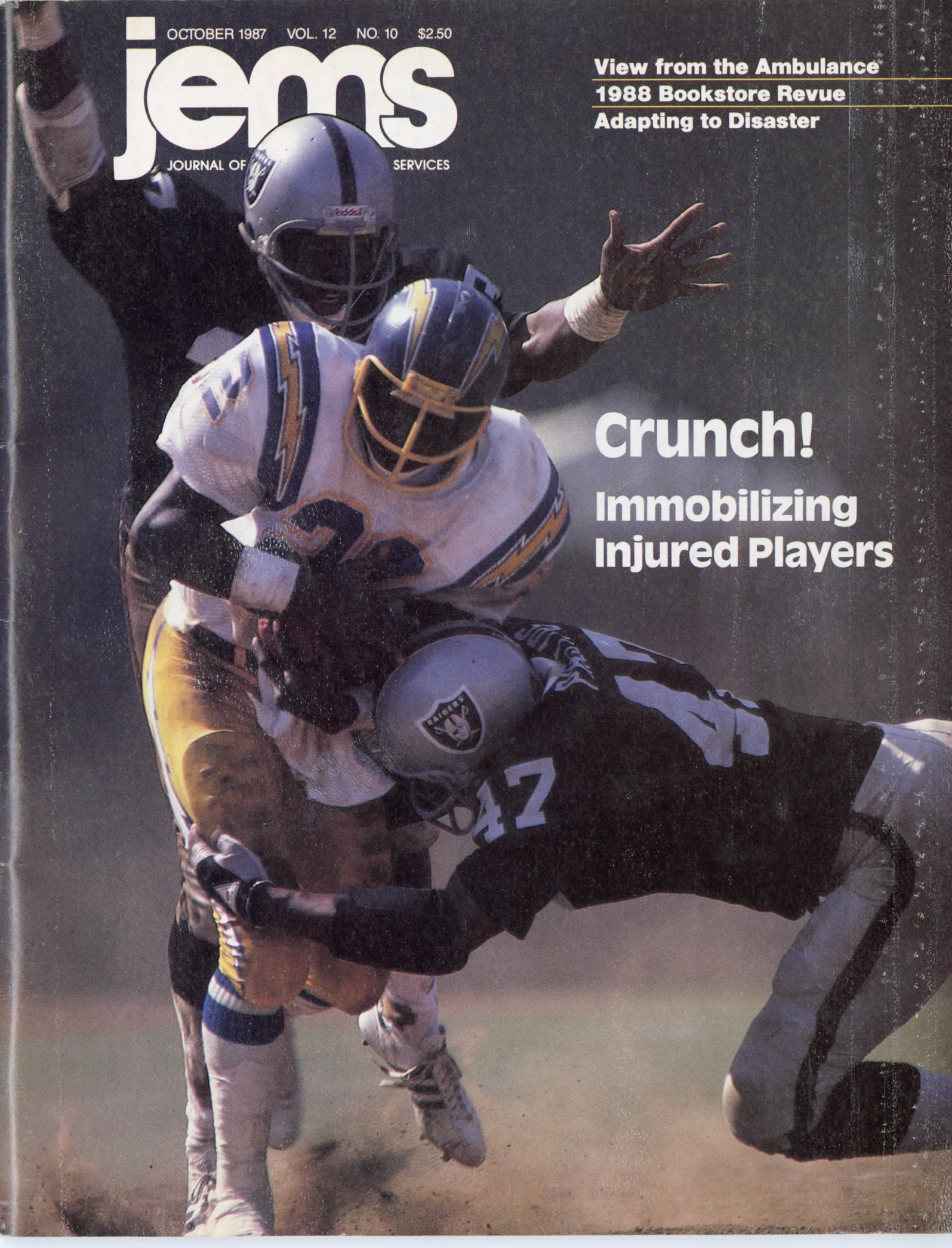
OCTOBER 1987 VOL. 12 NO. 10 \$2.50

# jems

JOURNAL OF SERVICES

**View from the Ambulance**  
**1988 Bookstore Revue**  
**Adapting to Disaster**

## **Crunch!** **Immobilizing** **Injured Players**

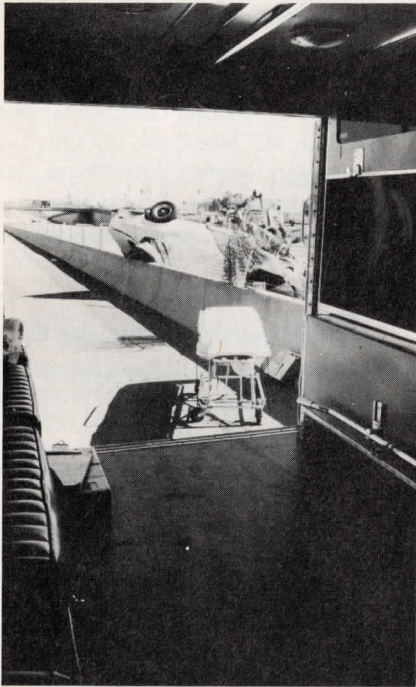


# CONTENTS

OCTOBER 1987, VOL. 12, NO. 10



38



42



63

Cover photo credit:  
Melanie Carr/Zephyr Pictures

## FEATURES

- 26 **MCI vs. Disaster Revisited** BY RICHARD NARAD. A look at one agency's response to two major disasters highlights the need for divergent planning.
- 33 **1988 Bookstore Revue** BY LAURA WIRTH. Our annual updated listing of current EMS publishers and publications includes a section on multi-media publishers.
- 38 **Immobilizing The Spine-Injured Football Player** BY FRANCIS FELD AND ROBERT BLANC. Football players with suspected cervical spine injuries require special considerations when preparing for transport to definitive care.
- 42 **The View From The Ambulance** BY JOHN M. BECKNELL. This insightful look at the lessons learned from working in EMS has a message for all rescuers.
- 49 **Cardiology Practicum** BY MIKE TAIGMAN AND SYD CANAN. Prehospital Recognition of Acute Myocardial Infarction.

## DEPARTMENTS

- 6 **Letters**
- 14 **Inside EMS** – Shooting Spree Leaves 15 Dead In Great Britain; Truck and Bus Collide in Florida; Prayers Are Answered For Cities Receiving Pope; UCLA MedStar Expands Coverage.
- 59 **Calendar**
- 77 **Review** – Verbal Judo by George J. Thompson, PhD and Michael J. Stroud, PhD. *Reviewed by Kate Dernocoeur.*
- 86 **Inroads**
- 89 **Advertiser Directory**
- 90 **The Last Word**

## COLUMNS

- 5 **The Publisher's Page** by Jim Page – Kill The Caveman.
- 6 **Guest Comment** by Peter M. Podell – Degree Preferred.
- 21 **Current Research** by Bruce Goldfarb – Heimlich Maneuver; Rotating Tourniquets; Nuclear Catastrophe.
- 23 **Tricks of the Trade** by Thom Dick – Good Enough: Is Your Job Too Dangerous These Days?
- 57 **Innovations** by Thom Dick – Best "Ears" In The Business,
- Master Cardiology Stethoscope
- 61 **Clinical Q & A** by Scott Bourn – More Tubes.
- 63 **The Legal File** by C.J. Shanaberger – The Trip Report IS Important.
- 68 **Teacher Talk** by Sandra Landis – Using Lab Animals in ET Training.
- 79 **Interface** by Jack Stout – Accreditation For What?
- 88 **In the Industry** by Rick Miner.

# Introducing The Clark Pediatric Unit

*Designed Exclusively for Pediatric Patients  
Distributed Exclusively by Southern*

The Clark pediatric unit is a new approach to a common problem. So new a patent is pending on it. So effective one person can administer C.P.R. while carrying a patient. So well designed it radically simplifies intubation and C spine immobilization. So cleverly laid out everything you need is within the easiest possible reach. And so compact it weighs less than 13 pounds, complete with everything except the patient. For ages birth - three years.

### Complete outfit includes:

- The pediatric restraint board, with four straps for securing legs & torso.
- One cervical immobilization device.
- Two sand bags [foam filled].
- Two ankle restraints.
- Two locking drug compartments.
- One pediatric laryngoscope handle and two blades.

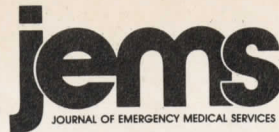
**Clark Pediatric Unit**  
Cat. No. 5375 . . . . . \$350



**Southern Ambulance Builders, Inc.**  
P.O. Drawer 949, LaGrange, GA 30241  
Phone Toll Free: 1-800-345-1964  
In Georgia: 1-800-342-2083



For More Information Circle #50 on Reader Service Card



- James O. Page**, Publisher  
**Keith Griffiths**, Executive Editor  
**Cleve Trimble, MD**, Medical Editor  
**Rick Miner**, Managing Editor  
**Dana A. Jarvis**, Production Editor  
**Gary R. Williams**, Director of Marketing  
**Thom Dick**, Associate Editor  
**Ron St. Germain**, Senior Editor  
**Betty Till**, Senior Editor  
**David M. Beck**, Assistant Editor  
**Diane Stocklin**, Assistant Editor  
**Lisa J. Cota**, Advertising Manager  
**Susan Seymour**, Account Executive  
**Pamela Stevenson**, Circulation Manager  
**Judy Trimble**, Corporate Accountant  
**Susan Jenkins**, Accounting Assistant  
**Contributing Editors:** Garry Briese; Norm Dinerman, MD; Mike Frank, MD; Gary Morris; Mary Newman; William Roush, MD  
**Jennifer Hutchinson**, Graphic Artist  
**Penney McBride**, Executive Assistant

### JEMS Publishing Company, Inc.

**James O. Page**, Chairman of the Board  
**Gary R. Williams**, President  
**Keith Griffiths**, Secretary-Treasurer

**JEMS**, *Journal of Emergency Medical Services*, (ISSN 0197-2510; Fed. ID #22-2357324) is published monthly by JEMS Publishing Co., 674 Via de la Valle, Suite 202, P.O. Box 1026, Solana Beach, CA 92075.

**Subscription information:** Send \$17.95 for one year (12 issues), \$29.95 for two years (24 issues) or \$39.95 for three years (36 issues) to P.O. Box 27966, San Diego, CA 92128. Add \$6 per year for Canadian subscriptions, \$12 per year for foreign subscriptions. For subscription orders, problems or for a change of address, call toll-free in the 48 contiguous states: 800/321-3333 (in California call 800/354-8400), 8:30 a.m. to 5:30 p.m. PST.

**Advertising information:** Rates are available upon request. Contact Lisa Cota, advertising manager, at 674 Via de la Valle, Suite 202, P.O. Box 1026, Solana Beach, CA 92075; 619/481-1128.

**Editorial information:** Manuscripts and queries should be directed to Betty Till, senior editor, P.O. Box 1026, Solana Beach, CA 92075. Editorial guidelines are available upon request. Submitted manuscripts should be typed, double-spaced and submitted in triplicate.

**Microfiche:** JEMS is available on microfiche. Please direct inquiries to University Microfilms International, 300 North Zeeb Road, Ann Arbor, MI 48106; 800/521-3044.

**Copyright 1987** JEMS Publishing Co., Inc. No material can be reproduced without the express permission of the publisher. ISSN 0197-2510. (Fed. ID -22-2357324).

**Postmaster:** Return Form 3579 to JEMS, P.O. Box 27966, San Diego, CA 92128.

Second-class circulation postage paid at Solana Beach, California and at additional mailing offices.

Also  
Inquire about  
our New and Used  
Ambulance Specials.

# CLEARANCE SALE

**On all Emergency Medical Supplies in Stock**  
**All at Cost prices**  
**All Dressings**  
**Mag Lights**

**&  
M  
O  
R  
E**



**RICHARDS AND CLARKE, INC.**

P.O. BOX 80046, BATON ROUGE,  
LA 70898 504/291-5555

TOLL FREE 800/233-5550 or IN LA 800/468-5473

For More Information Circle #54 on Reader Service Card