

**Hazmat  
Response**  
**Dispatch  
Blues**

February 1989

Volume 14 Number 2

\$3.00

**jems**  
JOURNAL OF EMERGENCY MEDICAL SERVICES

**Anaphylactic  
Shock-  
A Sting  
Can Kill**

# MAJOR RESPONSES OF 1988





# CONTENTS

## FEATURES

### Slurred Speech 29 by Aron T. Goldberg

Slurred speech can be a camouflage or a clue in detecting extrapyramidal reactions. This article addresses the signs and symptoms of an EPR in addition to the recommended prehospital treatment.

### Dispatch and the Law— 34 How to Avoid the 9-1-1 Litigation Blues by Richard Lazar

There are numerous duties and responsibilities legally imposed on EMS dispatchers today. This information may help to avoid contracting the "9-1-1 litigation blues."

### Anaphylactic Shock 42 (CEU Article) by Debra Cason

Most often caused by penicillin or insect stings, this type of shock presents a dramatic and potentially deadly emergency.

### Major Responses of 1988 54 by Rick Miner

The major incidents from the past year are pictorially presented.

### EMS Crosses Hazmat 58 Lines by Phillip Currance

A hazardous materials accident can change all the rules usually followed when responding to an emergency.

## COLUMNS

### The Publisher's Page 5 by Jim Page

### Guest Comment 6 by Leo Bosner

Are We Ready For An Armenia-Style Earthquake?

### Tricks of the Trade 21 by Thom Dick

The Rolls: Elegant Immobilizers You Make Yourself

### Current Research 23 by Bruce Goldfarb

### Special Report 25 by Judith Reid Graves and Debbie Ayrs

The Ground Was Screaming: Impressions of an International Rescue Effort

### Innovations 65 by Thom Dick

ProtectIV: Critikon's Answer to Safer IVs; Vacuum Splints Update

### Interface 67 by Jack Stout

Controlling Emergency Fleet Operating Costs

### The Legal File 70 by Carol Shanaberger

Covering School Sports—It's Not All Fun and Games

### Cardiology Practicum 73 by Mike Taigman and Syd Canan

Back to Basics

### Teacher Talk 75 by Walter C. Kennedy Jr.

### In the Industry 93 by Rick Miner



34

## DEPARTMENTS

Letters 11

Inside EMS 15

Calendar 77

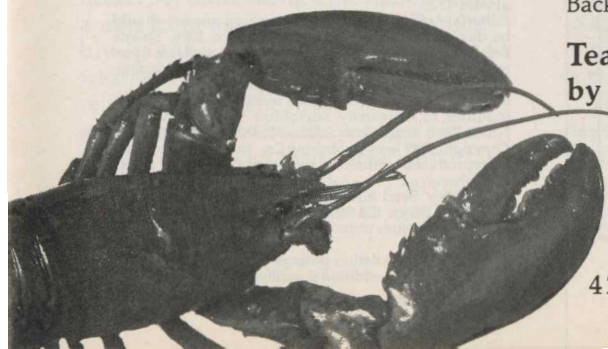
Classifieds 83

Inroads 90

Advertiser Directory 92

The Last Word 94

Cover:  
Photo by AP/Wide World





# Plan to buy 2-way radios this year? Here's a good reason to buy before March 31st!

It's our 1989 "Spring Price Break." Substantial savings on most Midland LMR mobiles and portables. Outstanding quality, performance and reliability. Great values now at your participating Midland dealer. See the Yellow Pages or call:

**1-800/MIDLAND**  
Ext. 1690

**MIDLAND LMR**  
LAND MOBILE RADIO

© 1989, Midland International



For More Information Circle #11 on Reader Service Card

New from JEMS

Introducing  
The Source Book of EMS Information

## Medical 911

**An essential resource manual for every health-care professional who administers, plans or delivers Emergency Medical Services**

For this fast-paced information age, keeping up with the changes and advances in EMS is a difficult and time-consuming task. That's why the Emergency Care Information Center, a national clearinghouse for EMS information, has published Medical 911 for the past 15 years.

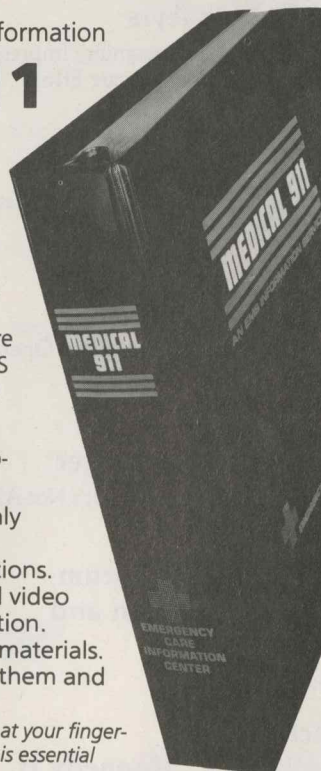
Here's just a sample of what you'll receive with a subscription to Medical 911:

- Timely, comprehensive news in the bimonthly EMS Communicator.
- Details on private and public EMS organizations.
- A comprehensive listing of books, films and video programs, complete with ordering information.
- Teaching programs and other instructional materials.
- Synopses of key EMS reports, where to get them and how much they cost.

If you're tired of scrambling for information that should be at your fingertips, then subscribe today. For a free brochure describing this essential resource of EMS information, write or call us today!

**Emergency Care Information Center**  
P.O. Box 1026, Solana Beach, California 92075  
**619 / 481-1128**

For More Information Circle #12 on Reader Service Card



# JEMS

Publisher and Editor-in-Chief  
**James O. Page**

Publisher and Executive Editor  
**Keith Griffiths**

Senior Editor  
**Nancy Peterson**

Medical Editor  
**Cleve Trimble, MD**

Associate Editors

**Thom Dick**

**Marion Garza**

**Valla Howell**

**Diane Lofshult**

**Lee A. Reeder III**

Assistant Editors

**Vivian Griffiths**

**Betty Scalice**

CEU Program Coordinator

**Twink Gorgen, RN**

Contributing Editors

**Betty Till, RN; Norm Dinerman, MD;**

**Mike Frank, MD; Gary Morris; Mary Newman;**

**William Roush, MD; Garry Briese;**

**Ken Stults; and Bruce Goldfarb**

Art Director

**Robert Schmitt**

Assistant Art Director

**Nancy Templar**

Production Coordinator

**Viki Cole**

Associate Publisher/Sales

**Rick Miner**

Advertising Director

**Lisa J. Cota**

Account Executive

**Marte Reavis**

Advertising Coordinator

**Janene Long**

Corporate Controller

**Marilyn Bock**

Corporate Accountant

**Judy Trimble**

Accounting Assistant

**Sandra Neely**

Circulation / Marketing Director

**Jay W. Hillis**

Circulation Fulfillment Manager

**Stephen W. Phillips**

Director of Conference Operations

**Betty Till**

Assistant Conference Planner

**Tamara McConnell**

Conference Marketing Coordinator

**Jeanette M. Freeman**

Executive Assistants

**Terri Maddox and Sara Case**

Administrative Assistant

**Chuck Toporek**

Office Receptionist

**Lori McGill**

**Jems Publishing Company, Inc.**

President

**James O. Page**

Secretary/Treasurer

**Keith Griffiths**

Vice President

**Betty Till**

Editorial Intern

**Andrew B. Circo**

**JEMS**, *Journal of Emergency Medical Services*, ISSN 0197-2510, is published monthly by JEMS Publishing Co., 674 Via de la Valle, Suite 200; P.O. Box 1026, Solana Beach, CA 92075; 619/481-1128 (Fed. ID #22-2357324).

**Subscription information:** Send \$19.97 for one year (12 issues), \$33.97 for two years (24 issues) or \$44.97 for three years (36 issues) to P.O. Box 27966, San Diego, CA 92128. Add \$10 per year for Canadian subscriptions, \$20 per year for foreign subscriptions. For new orders only, call toll free 1-800/344-8152 (in Calif. call 1-800/255-3302).

**Advertising information:** Rates are available upon request. Contact JEMS Advertising Department at 674 Via de la Valle, Suite 200, P.O. Box 1026, Solana Beach, CA 92075; 619/481-1128.

**Editorial information:** Manuscripts and queries should be directed to Nancy Peterson, P.O. Box 1026, Solana Beach, CA 92075. Editorial guidelines are available upon request. Submitted manuscripts should be typed, double-spaced and submitted in quadruplicate.

**Microfiche:** JEMS is available on microfiche. Please direct inquiries to University Microfilms International, 300 North Zeeb Road, Ann Arbor, MI 48106; 800/521-3044. **Copyright 1989** Jems Publishing Co., Inc. No material can be reproduced without the express permission of the publisher.

**Postmaster:** Send address changes to JEMS, P.O. Box 27966, San Diego, CA 92128-9959. Claims of non-receipt or damaged issues must be filed within three months of cover date.

Second-class circulation postage paid at Solana Beach, California and at additional mailing offices.

BPA membership applied for November 1988.