

February 1991 Volume 16 Number 2 \$3.00

jems

JOURNAL OF EMERGENCY MEDICAL SERVICES

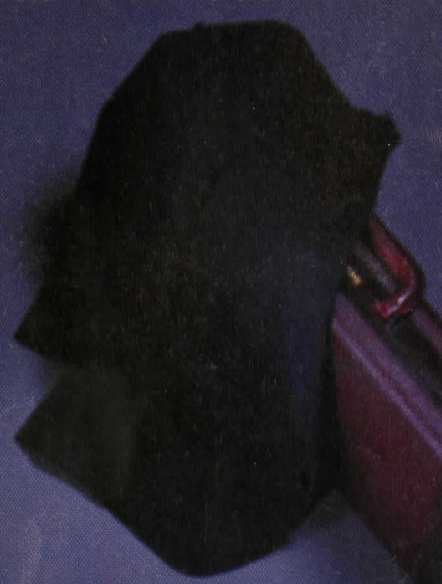


REACHING OUT

FOR VOLUNTEERS

- ◀ Financial Incentives for Volunteers
- ◀ Portrait of Today's Volunteer
- ◀ Comparing Volunteer Services

*****3-DIGIT 920
DICKZ13197 99DEC
BARONA RD CA 92040
0269



CONTENTS

February
1991
Volume 16,
Number 2

FEATURES

26 Just Say Know: Recognizing the Dangers of Commonplace Drugs (CEU Article)

BY SHAWN PRUCHNICKI, RPh, NREMT-P

Many providers believe that drug overdoses are restricted to illicit substances and thus underestimate the dangers of over-the-counter and prescription drugs. This article discusses the complications of common drug abuse and proper treatment options in the field.

47 Great Expectations: What Do EMS Volunteers Want From Management?

BY THOMAS H. SWAN, NREMT-P

When people volunteer their time and services to an organization or cause, they expect and deserve compensation of some kind in return. Find out what motivates volunteers and how to meet their needs.

50 Making the Grade: EMS in the High School Curriculum

BY DAVID M. KIRCHNER, EMT, BSED

Students at Eastern Lebanon County High School in Pennsylvania are taking advantage of their school's popular EMT program to get an early jump on EMS training.

53 The Rural Route to Success: Comparing EMS in Three Alabama Counties

BY JANET REICH, RN, MSHSA

Why do volunteer EMS systems in otherwise healthy economic communities fail, while other communities, with low per-capita incomes, enjoy thriving volunteer services? This article studies three volunteer systems in rural Alabama to determine the keys to success.

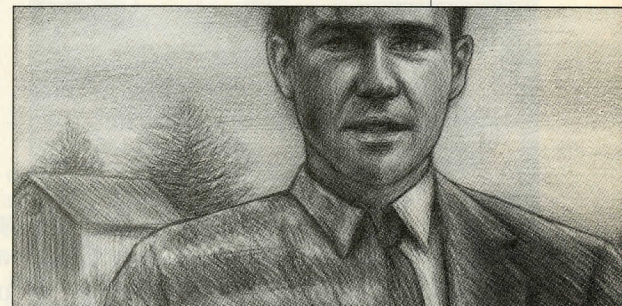
57 The Miraculous Recovery of Cleburne County EMS

BY MARION ANGELL GARZA

58 Money Talks, Nobody Walks: Financial Incentives for Volunteers

BY MARION ANGELL GARZA

Despite the non-paid status that the term "volunteer" implies, some EMS agencies are offering inventive forms of compensation to stem the exodus of their volunteer ranks.



62 The Changing Portrait of Today's Volunteer

BY AMBER SMITH

EMS systems are suffering as demographics change and economic hardships shrink the supply of volunteers nationwide. As times change, so does the profile of the American volunteer.

COVER

Design by
Kathy Bush
Photo by
Tom Page

COLUMNS

5 The Publisher's Page

BY JIM PAGE

One Lawyer Too Many

23 Current Research

BY BRUCE GOLDFARB

25 First Person

BY RALPH ALLEN

Brave Volunteers

71 Pediatric Notebook

BY KATHERINE A. LITRELL, RN, MSN,
AND G. PATRICIA CANTWELL, MD

Pediatric Status Epilepticus:
Managing the Complexities

DEPARTMENTS

6 Letters

14 Inside EMS

66 Classifieds

83 Calendar

85 Advertiser Directory

86 The Last Word

JEMS, Journal of Emergency Medical Services, ISSN 0197-2510, is published monthly by Jems Communications Inc., 1947 Camino Vida Roble, Suite 200, Carlsbad, CA 92008, 619/431-9797; P.O. Box 2789, Carlsbad, CA 92018. (Fed. ID #22-2357324).

Subscription information: Send \$19.97 for one year (12 issues), \$33.97 for two years (24 issues) or \$44.97 for three years (36 issues) to P.O. Box 27966, San Diego, CA 92128. Add \$10 per year for Canadian subscriptions, \$20 per year for foreign subscriptions. For new orders only, call toll-free 800/334-8152 (in California, call 800/255-3302).

Advertising information: Rates are available upon request. Contact JEMS Advertising Department at 1947 Camino Vida Roble, Suite 200, Carlsbad, CA 92008; P.O. Box 2789, Carlsbad, CA 92018; 619/431-9797.

Editorial information: Manuscripts and queries should be directed to Diane Lofshult, Jems Communications Inc., P.O. Box 2789, Carlsbad, CA 92018. Editorial guidelines are available upon request. Submitted manuscripts should be typed, double-spaced and submitted in quadruplicate.

Microfiche: JEMS is available on microfiche. Please direct inquiries to University Microfilms International, 300 North Zeeb Road, Ann Arbor, MI 48106; 800/521-3044.

Copyright 1990 Jems Publishing Co., Inc. No material can be reproduced without the expressed permission of the publisher.

Postmaster: Send address changes to JEMS, P.O. Box 27966, San Diego, CA 92128-9959. Claims of non-receipt or damaged issues must be filed within three months of cover date. Second-class circulation postage paid at Solana Beach, Calif., and at additional mailing offices.

BPA membership applied for November 1988.